



# LuckeLife Society

*Building Lifetime Connections  
Ensures Community Strength*



**Transforming Communities Through Family Stability,  
Recovery and Empowerment**

**A Comprehensive Approach to Addressing Generational Trauma and Building  
Sustainable Communities.**



carlenelucke@luckelivesociety.com



www.luckelivesociety.com

November 2024





# Mission & Vision

## > The Problem: Urgent Need for Change

Today, families in crisis face unprecedented challenges, often stemming from a societal system that has neglected the fundamental needs of family units. This systemic breakdown has led to a community plagued by broken wellness, where individuals experience deep detachment from themselves, their families, and their communities. This disconnection has fueled a rise in substance abuse and perpetuated cycles of instability. At LuckeLife Society, we are committed to reversing this trend by fostering wellness at every level—within the individual, the family, and the community. By strengthening these foundational bonds, we aim to rebuild a resilient community, reducing the adverse effects of crisis and empowering families to thrive together.

### Mission

To break the cycle of perpetual crisis faced by families experiencing both economic hardships and trauma. We recognize that these challenges are deeply intertwined, economic instability leading an increase in stress and family conflict, then exacerbating pre-existing trauma or triggering a new trauma response. Conversely, the impact of trauma can hinder a family's ability to secure stable employment, housing or access to basic needs.

to address this complex reality, we commit to a comprehensive approach to community support that acknowledges and focus' on the interconnected nature of these barriers. By providing integrated services and resources we aim to empower families to achieve stability, resilience and generational well-being.

### Vision

Our Vision is to create a community where families no longer face dual burdens in our community. Where economic hardship and trauma are not so predominate factors in our youth lives. We see a community where Families are stable and strong forces ensuring no child is left behind.

To achieve this LuckeLife Society believes we must bind the community together and work in unison.

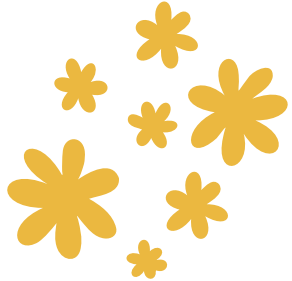
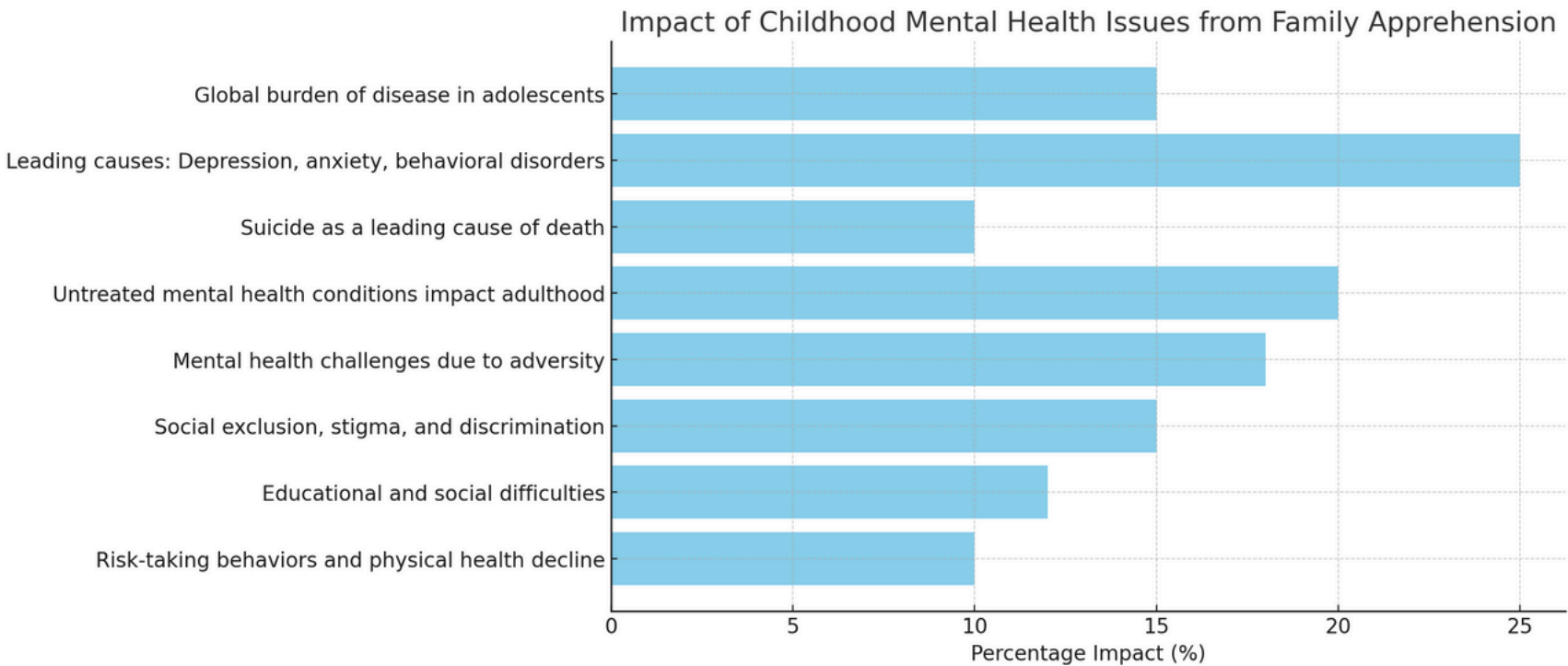




# Community Focused Healing

## > The Solution

Keeping Families together. LuckeLife Society focus' on keeping family units together. Providing them the tools and support as needed to ensure that growth in culture, community and individuality. The solutions of the past has created the culture we live in today; we all agree that change needs to be made. LuckeLife Society has proven with supports in place the child, family and community is stronger and healthier.



### → Objective

LuckeLife Society addresses the deep rooted challenges faced by at risk families. By focusing on the family unit rather than breaking down a family. Provide for the entire family as a whole. Currently families facing government intervention often do so due to poverty and lack of direct resources. With 87% court-ordered to work with the Ministry of Children and Family Development. When this action is taken traditional approach of intervention involves child apprehension which leads to: Higher dropout rates in education, social detachment and distrust of authorities and increase in substance abuse, violence and incarceration.

### → Core Belief

Sustainable change begins with proactive, family - centered interventions that emphasize health, life skills and overall wellness. Creating a new focus of care and support will break the cycle of Generational Trauma. Rebuilding cultural and community models of family focused care. Strengthening community around us and society as a whole.

### → Scope of Support

By focusing on the family and community we will create societal changes. How we approach each other and eliminate social and economic impacts on childhood issues in our community. Our approach spans family unity, addiction recovery and skill building to foster collective healing and long - term community resilience.



# The LuckeLife Society Solution



> A new Model for Family and Community Stability



**100%** Family Focused

Holistic Support System

Family Stability - Focused on Keeping families together through proactive support, mental health services and financial support

Recovery Support - Integrative wellness retreats and substance recovery programs that include skill development and self - sufficiency

Employment Pathways - Job training, certification and partnership with local businesses and sustainable employment opportunities

Community Health - by focusing on families we ensure the end of generational trauma and the community effects of this.





# Family Unity

## ➤ LuckeLife Approach


LuckeLife Society is proud to state that the first family intervention is a Success! Our first family that we provided intervention to were forced to live in a bedroom with other roommates living in other bedrooms of 4 bedroom home. This family of 3 were removed from this situation and kept together. LuckeLife Society provided temporary housing, direct support services to the children, life skills support and tools for adults, mental health support to all and connection to community resources focused on removing barriers and limitations.




due to economic barriers lived in bedroom of 4 bedroom home

18 months later moved into their own 3 bedroom condo

first time ever cooking dinner for family

**Keeping the Family Together** 

Finding and paying for temporary housing ensuring the family is safe, secure and a healthy environment.

**Direct and Indirect Services** 

LuckeLife Society ensured that tools and supports were provided depending on the individual family unit not on the expectation of government system. Focusing on physical and mental wellness for all.

**Future Empowerment** 

Providing tools and community resources. Helping to empower families in financial independence and knowledge. Allowing families to be empowered into future plans.



# Trauma Effects in Childhood

## > The Impact of Family Breakdown

Throughout time we have continued to provide services and support in the same manner. As time and generations have gone on we are seeing the results of taking a family apart. This does not just effect the Indigenous families of Canada but all of us. LuckeLife Society acknowledges the specific trauma that Indigenous families have endured, and the trauma to all families who have been faced with Government intervention as they proceed with apprehension as an affective tool when there is a crisis in a family. LuckeLife Society feels and has proven that by supporting the family and providing direct and indirect services can result in a stronger and healthier community.

If we acknowledge the Impacts of Childhood Trauma on our community then we can take the steps to remove those impacts from our society.

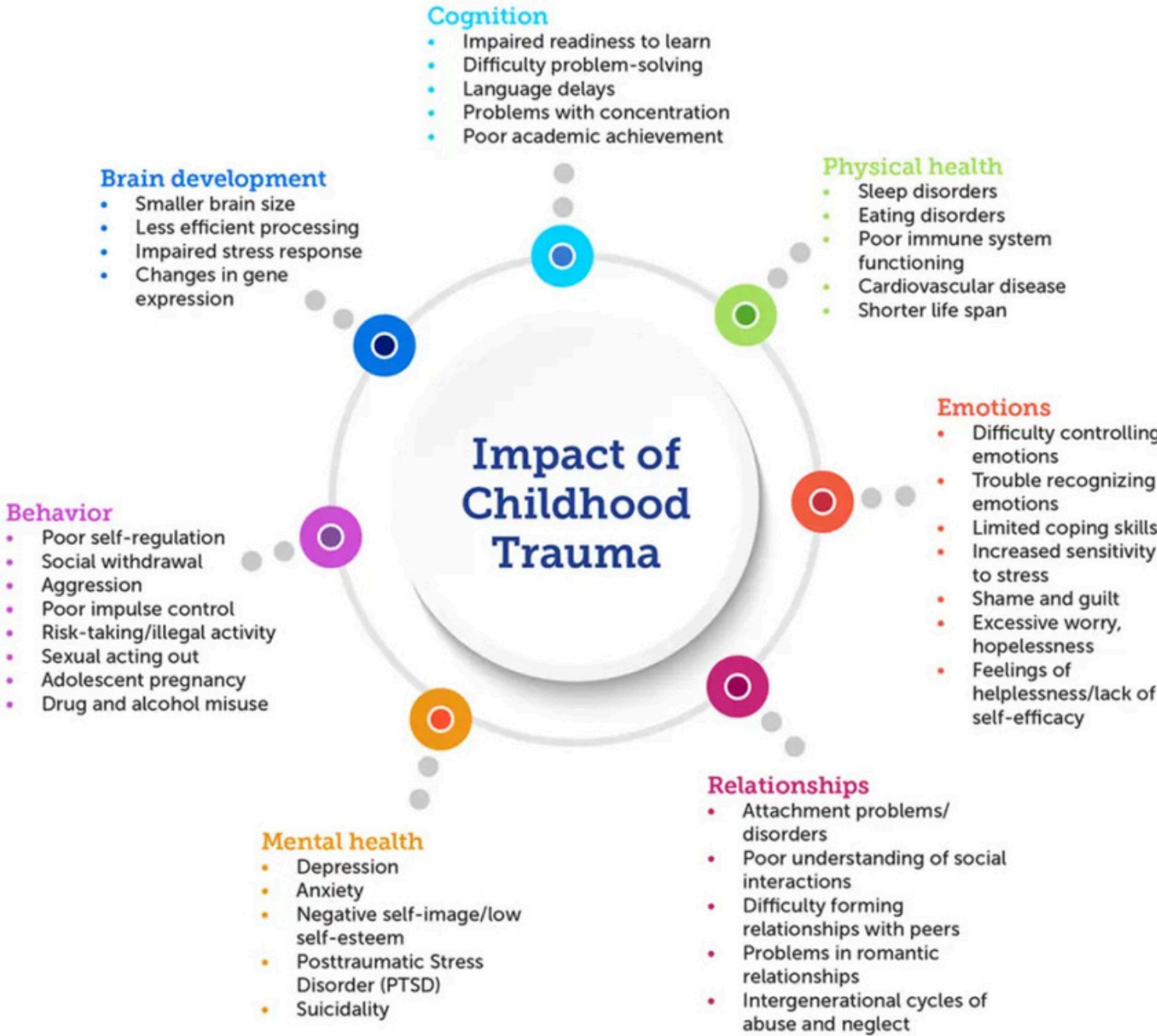
The First Nation Child In Care Report highlights that neglect is the primary category of maltreatment in investigations involving First Nations children, accounting for 71% of cases.

This high prevalence underscores systemic issues such as poverty, inadequate housing, and limited access to resources, which contribute to the challenges faced by these families.

Addressing these disparities requires a holistic approach that includes:

- Culturally Appropriate Support Services: Implementing services that respect and incorporate First Nations cultural practices and values to promote healing and resilience.
- Preventive Measures: Focusing on early intervention and support to address the root causes of neglect and prevent family separations.
- Policy Reforms: Advocating for changes in child welfare policies to reduce the overrepresentation of First Nations children and prioritize family preservation.

## Impact of Childhood Trauma





# Impact Community



## Looking at the Numbers

When you look at the number of children in care in Canada; 35% of our youth is removed from their homes and placed into external placement. When we are taking a third of our children out of their home, Stat Canada shows in 2021. We are unable to get statistics of the number of children in care to this date. 35% of our youth from 2021, add to that 35% of the adults connected to that youth shows well over 60% of our citizens affected by the current system as it response to societal issues and barriers.

In 2017 the University of Victoria noted that substance abuse cost Canadians in excess of \$46 BILLION dollars. Noting the affects of the current governmental response to childhood issues; and no change in those delivery systems only means that there is a substantial increase to the taxpayer in Canada.

LuckeLife Society is interested funneling these funds towards affordable housing, childcare, healthcare, mental health support, skill development, cultural teachings and feeding communities with healthy fresh food.

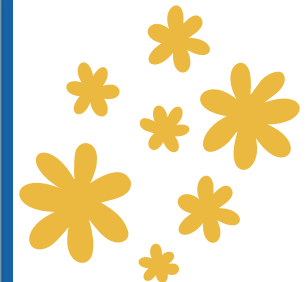
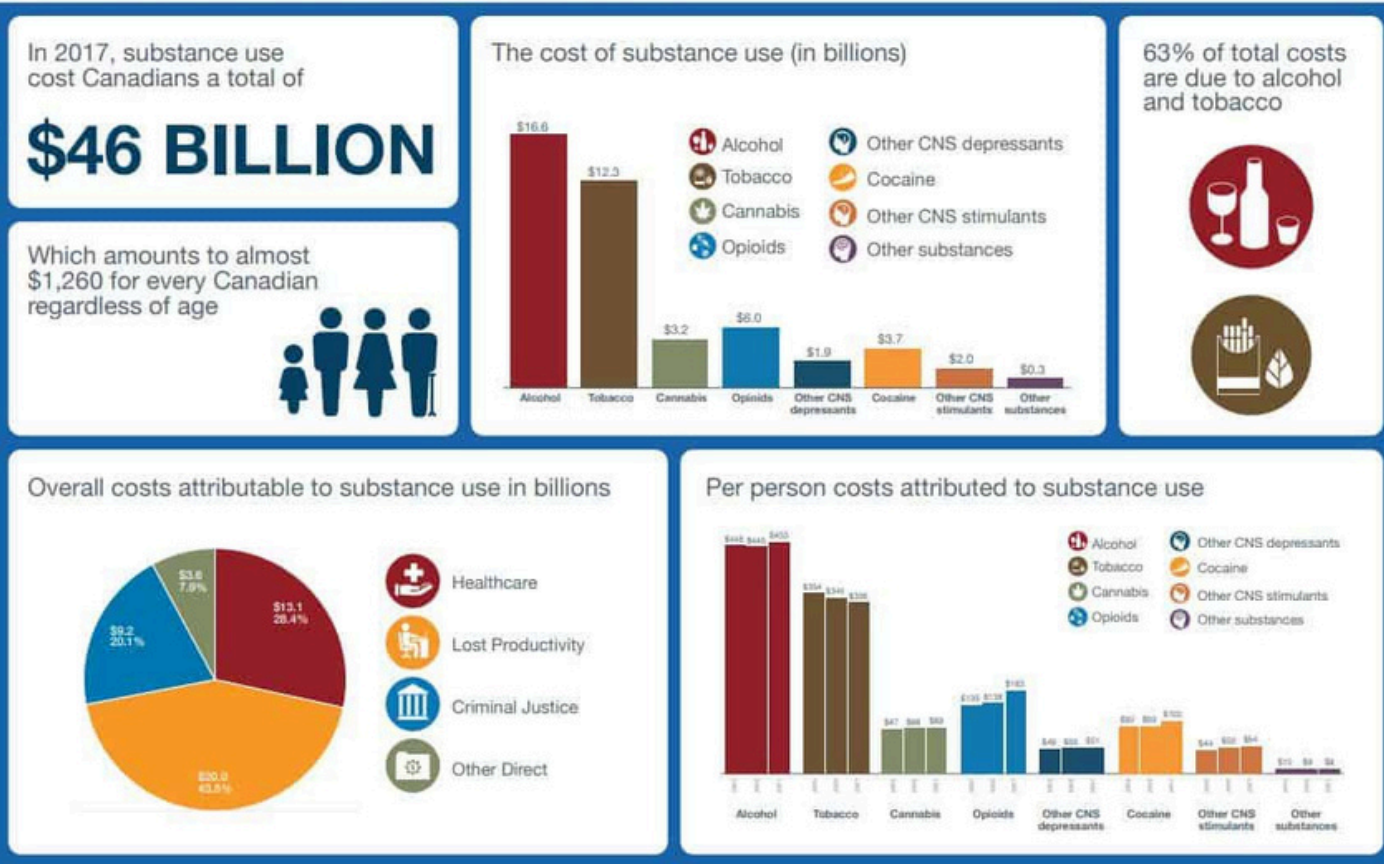
LuckeLife Society has spent the last 30+ years expressing to government to change how it delivers care and support to families. Nothing has changes but the number of families in crisis.

Rates of Indigenous and non-Indigenous foster children (per 1,000 children in the population) in private households by province and territory, Canada, 2011, 2016 and 2021

	Children in foster care					
	2011		2016		2021	
	Total Indigenous children	Non-Indigenous children	Total Indigenous children	Non-Indigenous children	Total Indigenous children	Non-Indigenous children
	Rate per 1,000 children					
Canada	36.6	2.9	33.5	2.6	32.4	2.3
Newfoundland and Labrador	18.4	5.7	20.1	6.0	24.6	4.9
Prince Edward Island	0.0	2.7	13.5	4.6	12.5	1.5
Nova Scotia	20.2	4.1	13.0	3.5	7.8	3.3
New Brunswick	16.6	2.2	11.8	3.5	19.3	5.2
Quebec	26.4	4.1	24.4	3.7	28.9	4.6
Ontario	24.6	2.5	19.8	2.0	19.1	1.3
Manitoba	58.7	3.9	63.9	4.0	61.8	2.3
Saskatchewan	31.8	1.8	25.4	2.0	28.5	1.5
Alberta	46.9	1.8	37.8	1.7	35.1	1.2
British Columbia	39.3	3.0	40.3	2.1	32.0	1.3
Yukon	44.2	0.0	44.4	0.0	27.0	2.1
Northwest Territories	24.8	0.0	19.8	0.0	21.3	2.8
Nunavut	12.5	0.0	9.1	0.0	10.2	0.0

## CSUCH Canadian Substance Use Costs and Harms

More information can be found at [www.csuch.ca](http://www.csuch.ca)





# Approach

## ➤ LuckeLife Society Family Health

In the prevention of family fragmentation and empower families to heal together.

Provide emergency support to help families stabilize in time of crisis.

Long term affordable living support - including housing, parenting, economic, physical and mental health.

Promote wellness practices and life coaching for entire family.

Provide direct in home support in respectful caring model

Life skill development, parenting skills and peer support

Community building skills

Healing circles that combine community and cultural needs

Focus on the family as a unit and individual basis

Connect to community leaders and resources to gain independence

This approach will create communities where families thrive, share their strengths and support each other.



Resulting in the Reduction of :  
Generational Childhood Trauma  
Substance Abuse  
Racism  
Social and Economical Imbalance  
Community Imbalance





# the Ask

Luckelife Society is seeking investment to provide immediate, sustained support for families in crisis—especially those who currently face significant delays in accessing essential services. Here’s the investment need and financial breakdown:

- 1. Current Cost of Service:**
  - Monthly Cost per Family: \$7,000
  - Current Goal: Support **\*\*50 families per month\*\*** over the next year, with services expanding to 100 families per month within five years.
- 2. Funding Gaps and Delays:**
  - **Federal & Provincial Funding Delays:** Approval for Indigenous family support typically takes 4 months, with invoiced payments refunded up to 6 months post-service delivery. Provincial government funding also follows a delayed invoice-based system, with payments trailing 4 months behind service delivery.
  - **Lack of Immediate Support:** There is no government funding to provide immediate support for families in crisis. Luckelife Society fills this critical gap, allowing families to access vital support when they need it most—not months later.
- 3. Investment Requirements:**
  - **Year 1 Investment Need:** To provide reliable, timely support to 50 families monthly without waiting for delayed government reimbursements, we seek \$4.2 million for the first year.
  - **Long-Term Scaling:** To sustain and expand the program to reach 100 families monthly within five years, additional phased investment will be sought, with clear annual growth metrics and impact reports.

### How Your Investment Makes an Immediate Impact

Your investment enables Luckelife Society to bridge the gap for families in need, ensuring they receive prompt, culturally sensitive, and effective support during their most challenging moments. By providing immediate funding, you help create a stable foundation for families who would otherwise be left waiting, enabling Luckelife to deliver essential services when they’re most needed.



*Building Lifetime Connections  
Ensures Community Strength*

# Call to Action

Join us in transforming the future of families and communities by addressing the systemic challenges that lead to broken wellness and family separations. With your investment, Luckelife Society will:

**Empower Families in Crisis:** Support proactive programs that keep families together, providing culturally sensitive mental health resources, family stability programs, and holistic recovery support.

**Promote Community Healing:** Help us reduce the adverse effects of detachment, trauma, and substance abuse by investing in skill development and employment pathways that strengthen community resilience.

**Champion Change for Generations:** Your partnership will enable us to scale sustainable solutions for vulnerable families, breaking cycles of crisis and empowering families to thrive.

Together, we can drive systemic change, creating a legacy of strong, self-sustaining communities. Invest in a brighter future with Luckelife Society—where healing begins with empowering families.



Investing in Luckelife Society offers a unique blend of social impact, community engagement, and sustainable growth potential. Here are specific benefits for investors:

## 1. Social Return on Investment (SROI)

- **Tangible Impact:** Investors contribute directly to reducing family separations, substance abuse, and mental health challenges, creating measurable improvements in the lives of vulnerable families.

- **Long-Term Community Health:** By supporting holistic wellness initiatives, investors play a key role in breaking cycles of crisis and poverty, building resilient communities with lasting socio-economic benefits.

## 2. Community and Brand Alignment

- **Reputation Building:** Associating with a mission-driven organization that addresses critical social issues like family stability, recovery, and employment can elevate the investor's reputation as a community ally.

- **Alignment with Social Values:** Investors with a focus on family, health, or community services can align their values with an organization dedicated to transformative change.

## 3. Government and Community Partnerships

- **Leveraged Impact through Collaboration:** Luckelife's partnerships with federal and provincial programs, local businesses, and health providers enhance program reach, maximizing the impact of each dollar invested.

- **Potential for Policy Influence:** Supporting a forward-thinking organization addressing systemic issues may allow investors to shape public dialogue and influence policy, advancing holistic solutions in child welfare and mental health.

## 4. Scalable and Sustainable Social Enterprise Model

- **Diverse Revenue Streams:** Luckelife Society's flexible service model—charging fees through partnerships, government programs, and a potential private pay model—enables a more self-sustaining model, reducing dependence on donations.

- **Growth Potential:** As the organization expands its partnerships and refines its service model, it can scale across additional regions, opening new avenues for community impact and return on social investment.

## 5. Data-Driven Impact Measurement

- **Access to Impact Metrics:** Investors receive insights into the effectiveness of their contributions, with Luckelife's focus on data transparency and tracking of key metrics (e.g., family stability rates, substance abuse reduction, job placement success).

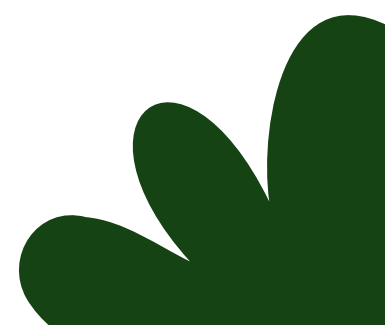
- **Showcase of Success Stories:** Anonymous case studies and outcome reports provide a compelling view of the real-life transformations facilitated by investor support.

## 6. Recognition and Legacy

- **Public Acknowledgment:** Investors may be publicly recognized as key supporters, potentially in Luckelife's reports, marketing materials, and events, strengthening their public profile.

- **Lasting Community Legacy:** Through an investment in Luckelife Society, investors leave a meaningful legacy of contributing to safer, healthier, and self-sufficient communities.

Investing in Luckelife Society is an opportunity to support a scalable solution to family and community challenges, ensuring real, lasting change in a way that benefits both society and the investor's social impact objectives.

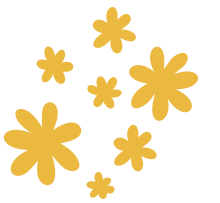





November 2024



# Thank You So Much



 604-787-6454

 Surrey BC, Canada

 [carlenelucke@luckelifesociety.com](mailto:carlenelucke@luckelifesociety.com)

 [www.luckelifesociety.com](http://www.luckelifesociety.com)

